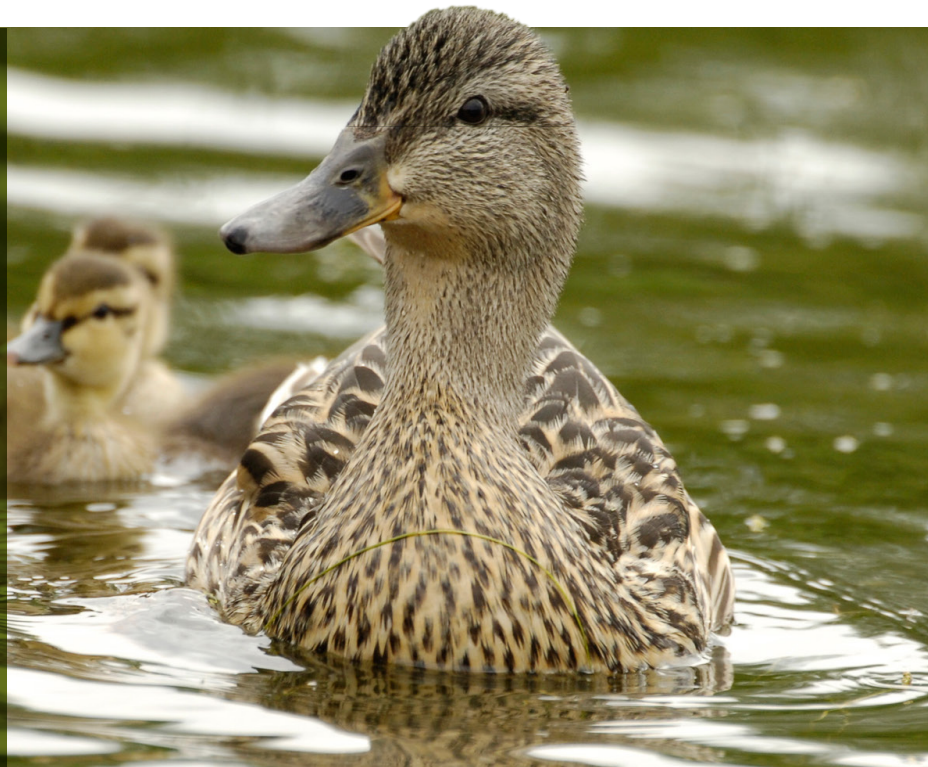




Prairie Pothole Joint Venture

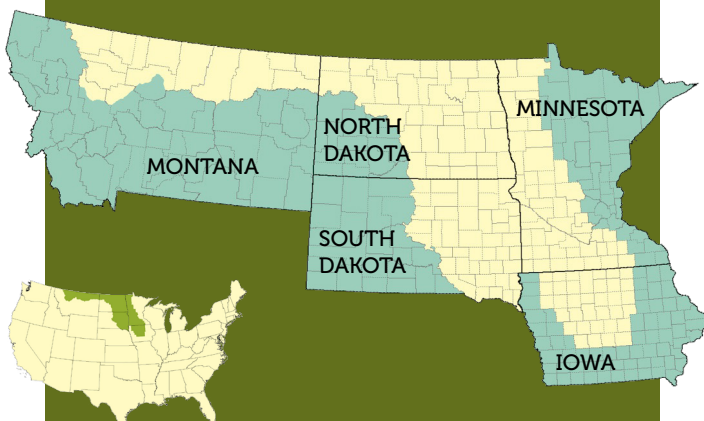


How do we accomplish conservation in the 21st century in one of the most unique wetland landscapes in the country, and accomplish it in a way that benefits both landowners and wildlife? ►► **Through Partnerships!**



WHY ARE PRAIRIE POTHoles SO UNIQUE?

Found nowhere else in the United States, this unique region features millions of small basins that retain water over various periods in a year. These small basins were formed thousands of years ago by retreating glaciers. Surrounding a large number of these "prairie potholes" are still relatively large expanses of grasslands. The wetlands and grasslands are important for both wildlife and the ranching community.



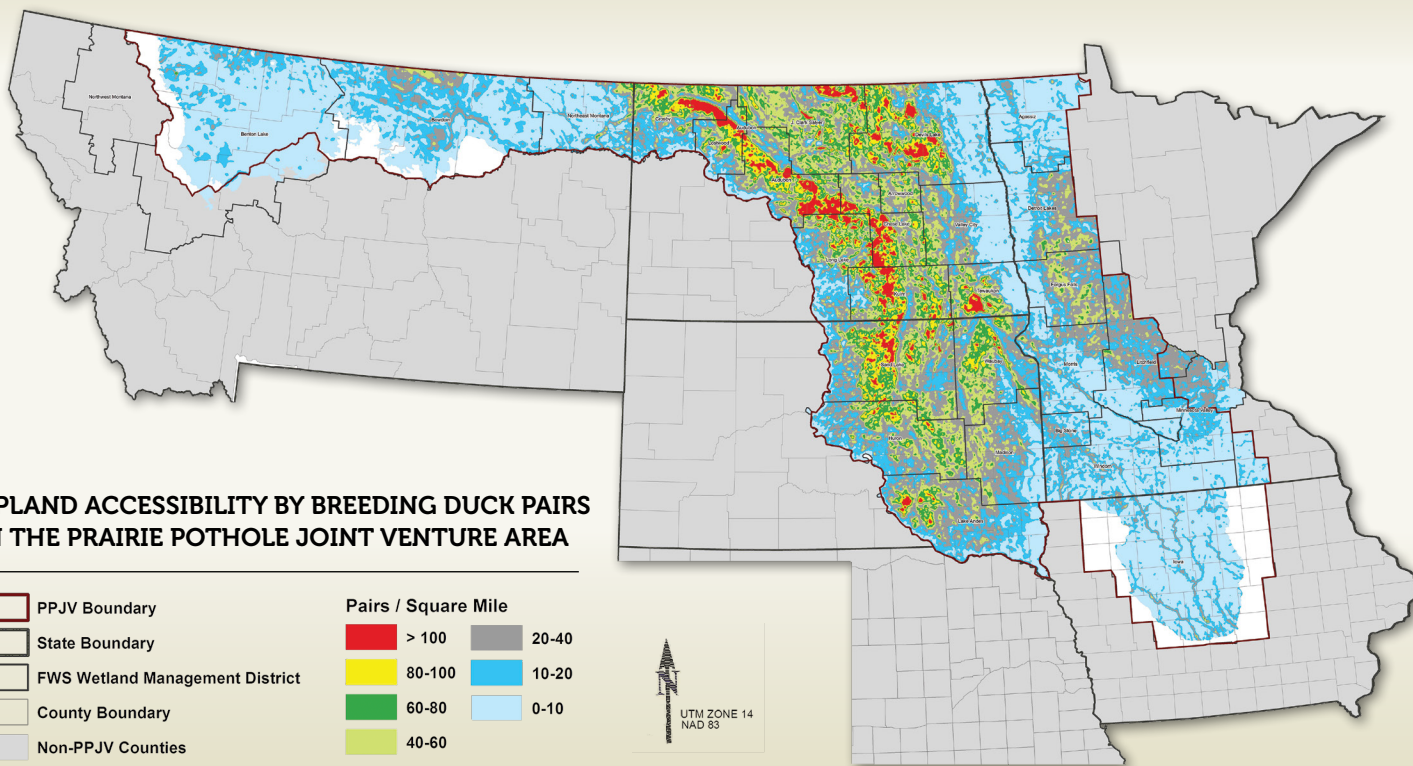
The Prairie Pothole Joint Venture (PPJV) is a voluntary, non-regulatory, self-directed partnership involving federal and state agencies, non-governmental conservation groups, private landowners, scientists, universities, policy makers, resource managers, corporations, and others interested in prairie habitat conservation. PPJV partners realize they can achieve more through collaboration than by acting alone.

The PPJV was established in 1987 as one of the original six priority joint ventures under the North American Waterfowl Management Plan. Today, the PPJV stands out as one of the most robust, science-based joint ventures in the country. Through rigorous spatial planning tools, the PPJV partnership strategically conserves, restores and enhances high priority wetland and grassland habitat to help sustain populations of waterfowl, shorebirds, waterbirds, and prairie landbirds.



◀◀ PRAIRIE POTHOLE JOINT VENTURE REGION

The PPJV includes one-third of North America's Prairie Pothole Region (PPR), including portions of Montana, North Dakota, South Dakota, Minnesota and Iowa. The remaining two-thirds is located in the Canadian provinces of Manitoba, Saskatchewan and Alberta.



BENEFITS OF CONSERVATION.

In addition to providing habitat for a broad suite of wetland-dependent wildlife species, prairie pothole wetlands and grasslands confer a variety of ecological goods and services to society. These benefits include food, water purification, carbon sequestration, soil stabilization, recreation, cultural values and hydro-logic storage to reduce flood severity.

**LEARN MORE ABOUT THE PPJV OR
SIGN-UP FOR OUR E-NEWSLETTER
AT WWW.PPJV.ORG!**



**Prairie Pothole
JOINT VENTURE**

PPJV
US Fish & Wildlife Service
PO Box 25486
Denver, CO 80255
Phone: 303-236-4412

SOLID SCIENCE. The PPJV uses cutting-edge technology, innovative science, and critical evaluation to create a solid foundation for delivery of programs. The PPJV provides partners with tools to target habitat conservation efforts for maximum effectiveness and to scientifically evaluate conservation gain.

COMMITMENT TO PRAIRIE CONSERVATION. The wetland and prairie grasslands in this region are internationally important. Yet, remaining grasslands and associated wetlands are significantly declining from conversion to row crop agriculture, energy and other development. The region is now the most threatened breeding waterfowl and grassland bird habitat in the United States. Fortunately, through continued commitment, innovative thinking and dedicated partners, meaningful conservation accomplishments remain possible.



INVOLVED PRIVATE LANDOWNERS. Eighty-five percent of the land in the U.S. Prairie Pothole Region is privately owned, so landowners play an essential role in wildlife habitat conservation in the region. Thankfully, there are private landowners in the PPJV who want to implement conservation actions. These landowners recognize that conservation programs on their lands can improve the soil, water and wildlife resources and be value-added to their operations.

